



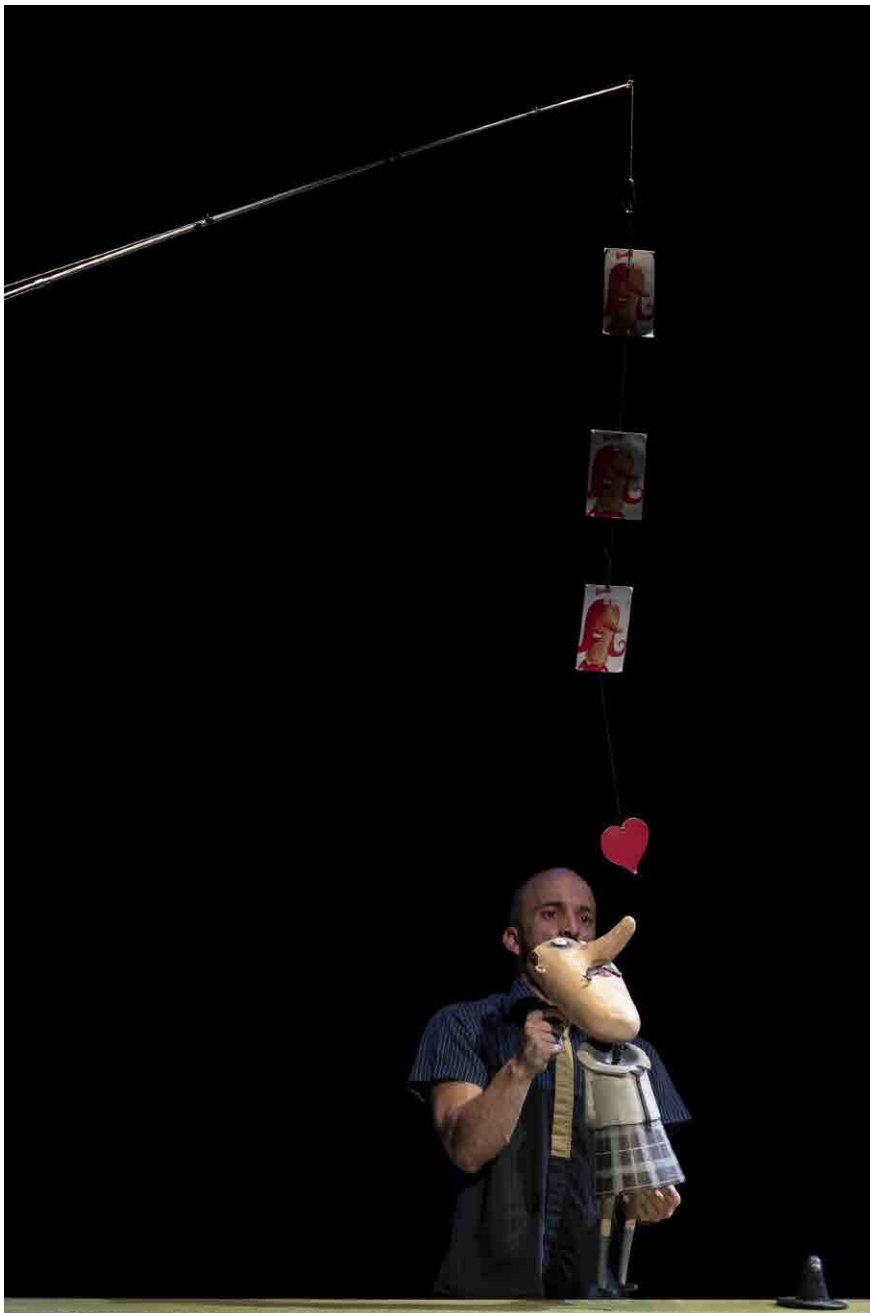
CINDERELA (3+)

Teatro de Marionetas do Porto

SYNOPSIS

CINDERELA

This is not a traditional Cinderella. There is a somewhat anachronistic rewriting of the traditional story, from the versions of Perrault and Grimm. Characters from other fairy tales fall from the sky to make Cinderella's life difficult. There is a Bad Witch who hates stories with a happy ending and a Big Bad Wolf disguised as a policeman, patrolling the forest roads. The Seven Dwarves are called to save Cinderella from inevitable death, as specialists in the techniques for saving poisoned young ladies. The Fairy Godmother is an irascible socialite and settles a score with the Bad Witch in a wrestling combat. In the end, Cinderella really marries the Prince and they have lots of children to everybody's relief.



ARTIST IC FILE

CINDERELA

staging, text and scenography
João Paulo Seara Cardoso

marionettes
a partir de desenhos de João Vaz de Carvalho

music
Paul Ferrer

costumes
Pedro Ribeiro

movement coordination
Isabel Barros

lighting design
António Real and Rui Pedro Rodrigues

production
Sofia Carvalho

cast
Micaela Soares
Shirley Resende
Vitor Gomes

lighting and sound operation
Filipe Azevedo

production assistants
Edgard Fernandes
Pedro Miguel Castro

construction workshop
Rui Pedro Rodrigues (*coordination and modeling*)
Inês Coutinho (*painting*)
Nuno Valdemar Guedes
Filipe Garcia

scenography construction
Américo Castanheira, Tudo-Faço

graphic design
Jorge Cerqueira

stage photography
Pedro Sardinha

support
Balletteatro Auditório

co-production
Teatro de Marionetas do Porto / Auditório de Espinho / FIMS – Chão de Oliva

TECHNICAL RIDER

CINDERELA

Stage

8 m - downstage (min.)

8 m - depth (min.)

5 m - height (min.)

Black scene - black box

Lighting

Digital dimmers – 48 circuits – Prot. Com. DMX512

Lighting console grandMA 2 commandwing (*company equipment*)

Light stage bars (*see plan attached*)

Filts (*company equipment*)

Spotlights:

8 PC 1KW (with barndoors and filter frames)

20 Proj. Profiles 1Kw 25/50

8 Proj. Par 64 CP60 (with filter frames)

Sound

1 monitor on stage

1 Mixing table

1 Microphone CAD M179 (*company equipment*)

Backstage

3 individual dressing-rooms or 1 collective dressing-room

Setting-up

12 hours (3 shifts of 4h)

Disassembling and upload:

2 hours

STAFF NEEDED

CINDERELA

- 2 assistants for loading and unloading
- Light technician
- Sound technician
- Stage technician

WORK PLAN

	SCENOGRAPHY	BLACK SCENE	LIGHTING	SOUND
1st SHIFT 4h	SETTING-UP	SETTING-UP	SETTING-UP	SETTING-UP
2nd SHIFT 4h		CHECKING	CHECKING	CHECKING AND PROGRAMMING
3rd SHIFT 4h			PROGRAMMING AND REHEARSAL	GENERAL REHEARSAL

NOTES

- Before setting up, the stage and grid must be clean and without any equipment.
- We are using a smoke machine and two small explosives (*company material*).

The performance lasts for: **55 minutes**

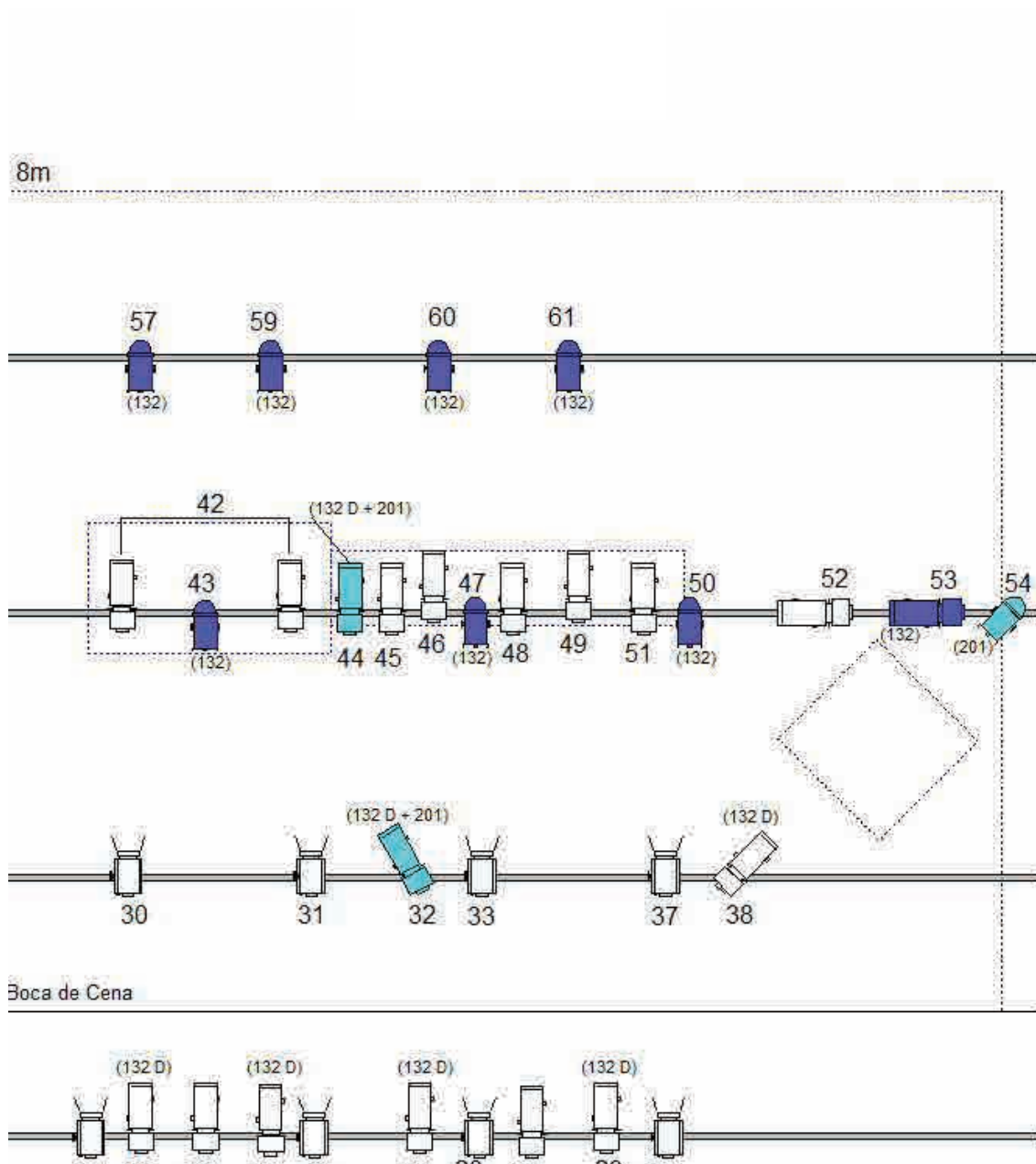
Age rate: **3+**

All promotional material for the performance must include the following

Co-production Teatro de Marionetas do Porto/Auditório de Espinho / FIMS - Chão de Oliva
Company financed by República Portuguesa/Cultura and DGArtes
(with logos)

LIGHTING PLANT

CINDERELA



STAGE PHOTOGRAPHY
CINDERELA



STAGE PHOTOGRAPHY

CINDERELA

