



SYNOPSIS

NUNCA

More than a hundred years have passed since the well-known adventures in Neverland. Peter Pan went to live in London with Wendy. They got married, had children and the years went by... In this possible present time there is a teenage boy called *Nunca* by his parents and we will never know why...

Nunca is a descendant of Peter Pan, in fact, his great-grandson. His destiny is to rescue Neverland from the dark age it has fallen into since Peter Pan left. This time the villain is Captain Fork, the grandson of Captain Hook, who took his grandfather's place years after he was eaten by a huge crocodile that was rarely late.

Will *Nunca* bring back the balance of all magic to Neverland, with the help of some unusual companions?



ARTISTIC INFORMATION

NUNCA

Staging, text and Scenography

Rui Queiroz de Matos

Marionettes

Rosário Matos

Lighting design

Filipe Azevedo

Cast

Rui Queiroz de Matos

Production

Sofia Carvalho

Graphic design and production

Pedro Ramos

Staging assistant

Micaela Soares

Lighting and sound operation

Filipe Azevedo

Construction workshop

João Pedro Trindade e Rosário Matos

Stage photography

Susana Neves

TECHNICAL RIDER

NUNCA

BLACK SCENE

- 5,5m – downstage / 5,5m - depth / 3,5m – height
- black box
- total blackout

IMPORTANT*

This very small dimension show is only effective in an amphitheatre or with the audience at the stage level. In a theatre room with a stage elevation, it will be necessary to place the audience and the scenario at the same level (see the *show's performance scheme*)

LIGHTING

- Company equipment consisting of mini-projectors, light desk and racks.

Necessary on stage:

- Three-phase connection;

SOUND

Company equipment - CD player and mixer;

Necessary:

- Room amplification;

BACKSTAGE

- 1 dressing-room

SETTING-UP TIME

- 12 hours (3 x 4 hours shifts)

Disassembling and upload:

- 2h00

SUPPORT STAFF NEEDED

NUNCA

- 2 assistants for loading and unloading
- lighting technician
- Sound technician

WORK PLAN

	SCENOGRAPHY	BLACK SCENE	LIGHTING	SOUND
1st SHIFT 4h	SETTING-UP	SETTING-UP	SETTING-UP	SETTING-UP
2nd SHIFT 4h		CHECKING	CHECKING	CHECKING AND PROGRAMMING
3rd SHIFT 4h			PROGRAMMING AND REHEARSAL	GENERAL REHEARSAL

NOTE

- Before setting up, the stage and grid must be clean and without any equipment..

The performance lasts for **45 minutes**

Age rate: **3+**

Lotation: **150**

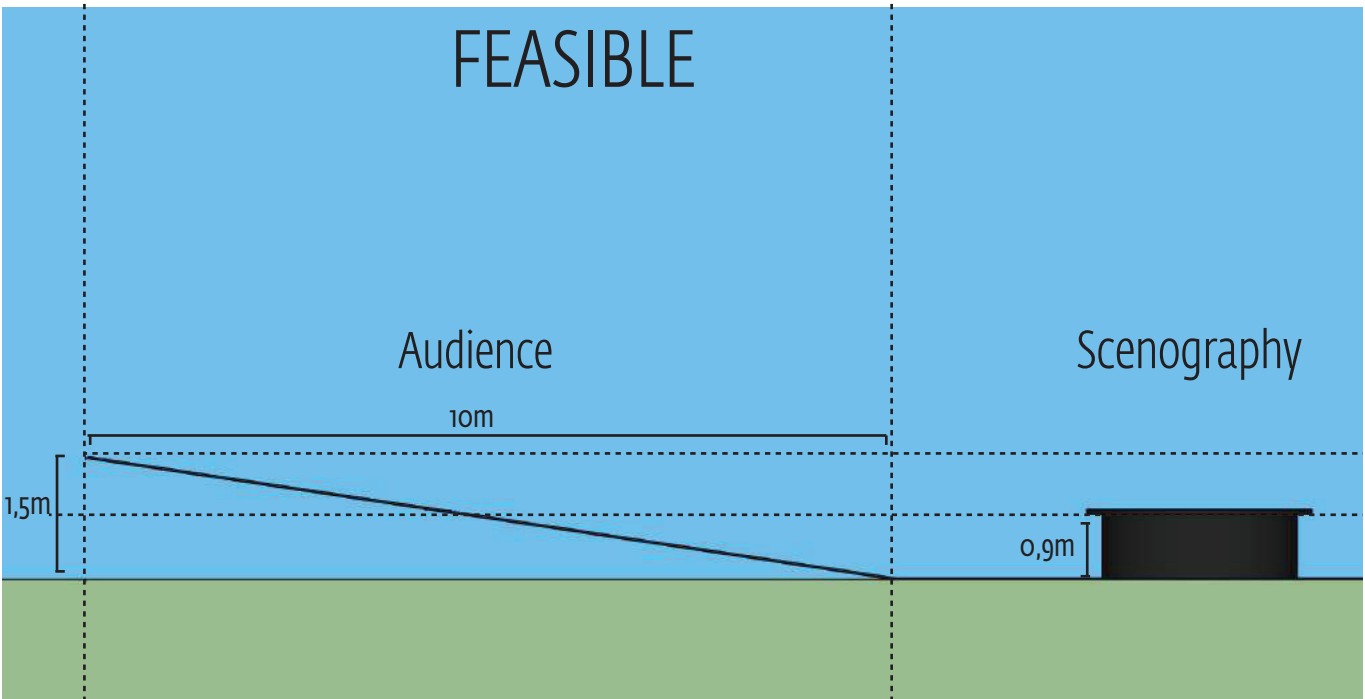
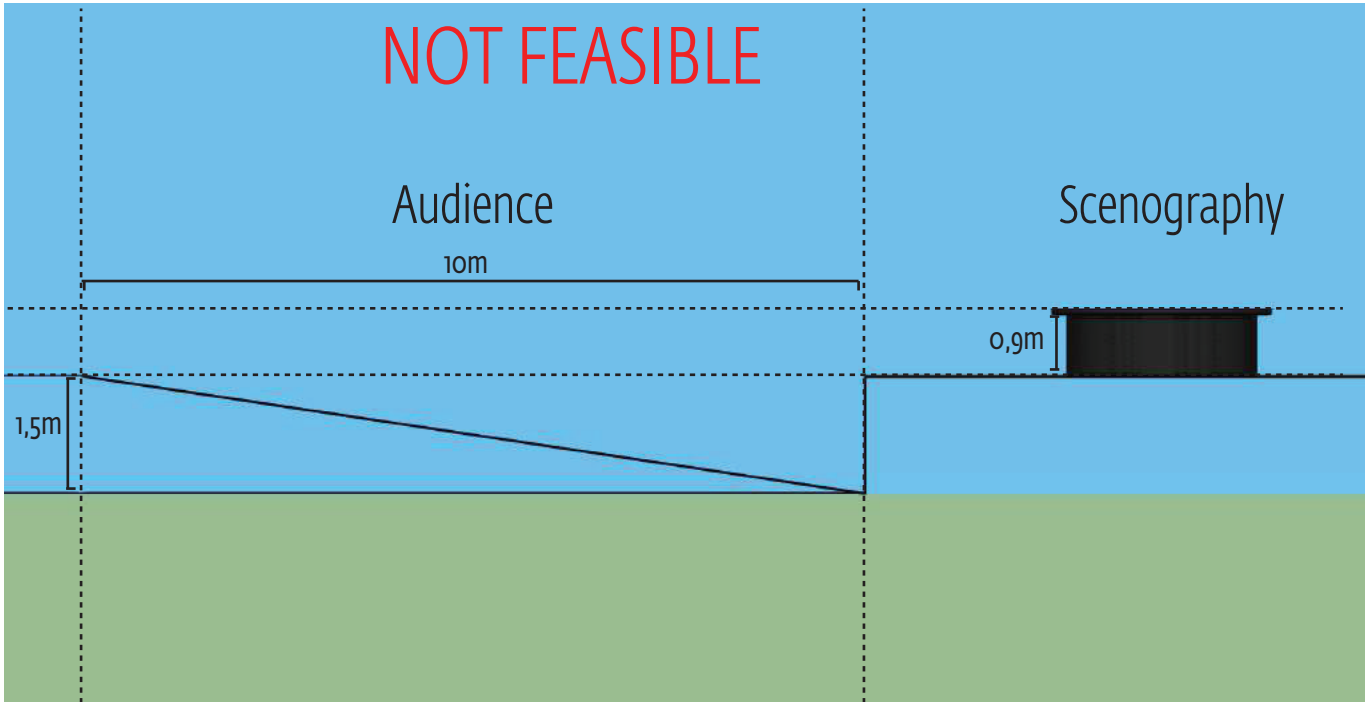
All promotional material for the performance must include the following:

Company sponsored by República Portuguesa/Ministério da Cultura and DGArtes (with logos)

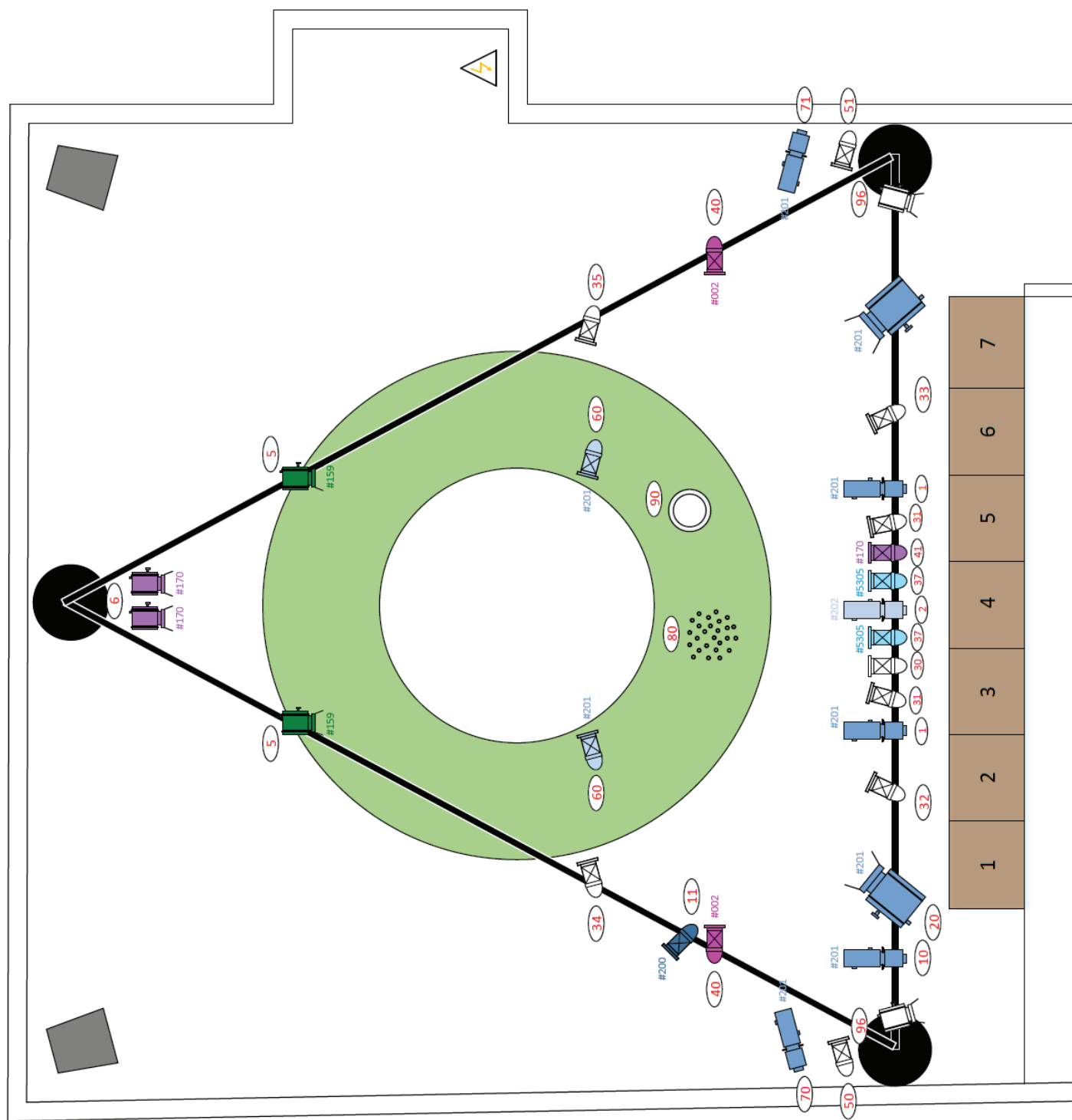
Coproduction Teatro de Marionetas do Porto and Centro Cultural Vila Flor

SHOW'S PERFORMANCE SCHEME*

NUNCA



LIGHTING PLAN
NUNCA



STAGE PHOTOGRAPHY
NUNCA



STAGE PHOTOGRAPHY
NUNCA



STAGE PHOTOGRAPHY
NUNCA

