



SYNOPSIS

BARBA AZUL

Unlike the tragic fairy tale, this approach explores an alternative that focuses on the complex personality of Bluebeard.

This version includes other characters from Charles Perrault's universe. Here, Bluebeard gets involved in a plot full of funny and unexpected events, reflecting the vicissitudes of human behavior.



ARTISTIC INFORMATION

BARBA AZUL

Staging and text

Rui Queiroz de Matos

Scenography

Rui Queiroz de Matos

Filipe Azevedo

Marionettes and illustration

Júlio Vanzeler

Music

Pedro Cardoso

Costumes

Patrícia Valente

Lighting design

Filipe Azevedo

Video design and Video mapping

Ivo Reis

Cast

Micaela Soares

Rui Queiroz de Matos

Vitor Gomes

Production

Sofia Carvalho

Graphic design and production assistance

Pedro Ramos

Lighting, sound and video operation

Filipe Azevedo

Construction workshop

Rosário Matos e Ana Pinto

Costume making

Carla Pereira

Stage photography

Susana Neves

TECHNICAL RIDER

BARBA AZUL

STAGE

Ideal: 10m – downstage / 10m - depht / 6m – height min.

Min.: 8m – downstage / 8m – depht.

BLACK SCENE

Stage box with total cloth + 2 legs for prop storage (see stage plot)

Black floor (linoleum or wood)

LIGHTING

Digital dimmers - 45 circuits - Prot. Com. DMX512

Lighting console grandMA 2 Ultra Light (Company equipment)

Light stage bars (see plan attached)

Structures:

2x side towers with 2m high

2x side towers with 3m high

Spotlights: (see lighting plan)

14x PC 1000W (with barndoors and filter frames)

2x PAR 64 (with filter frames)

11x Recortes 1000W 12/28 (with filter frames)

18x Recortes 1000W 25/50 ou 45/75 (with filter frames)

Necessary on stage:

6x dimmers circuits

1x 220V/ socket

Filters:

(company equipment)

SOUND

- Stereo amplification system
- 2 monitors on stage
- 1 mixing table with at least 3 channels
- 1 lapel microphone (company equipment)

VIDEO

- 1 Video projector Optoma (Company equipment)
- 1 Laptop computer MAC (Company equipment)
- Connection stage/video control by VGA 50m (company equipment)

BACKSTAGE

- 3 single dressing-rooms or 1 multiple dressing-room

SETTING-UP TIME

- 12 hours (3 x 4 hours shifts)

Disassembling and upload:

- 2h00

SUPPORT STAFF NEEDED

BARBA AZUL

- 2 assistants for loading and unloading
- lighting technician
- Sound technician
- Video technician

WORK PLAN

	SCENOGRAPHY	BLACK SCENE	LIGHTING	SOUND
1st SHIFT 4h	SETTING-UP	SETTING-UP	SETTING-UP	SETTING-UP
2nd SHIFT 4h		CHECKING	CHECKING	CHECKING AND PROGRAMMING
3rd SHIFT 4h			PROGRAMMING AND REHEARSAL	GENERAL REHEARSAL

NOTE

- Before setting up, the stage and grid must be clean and without any equipment.

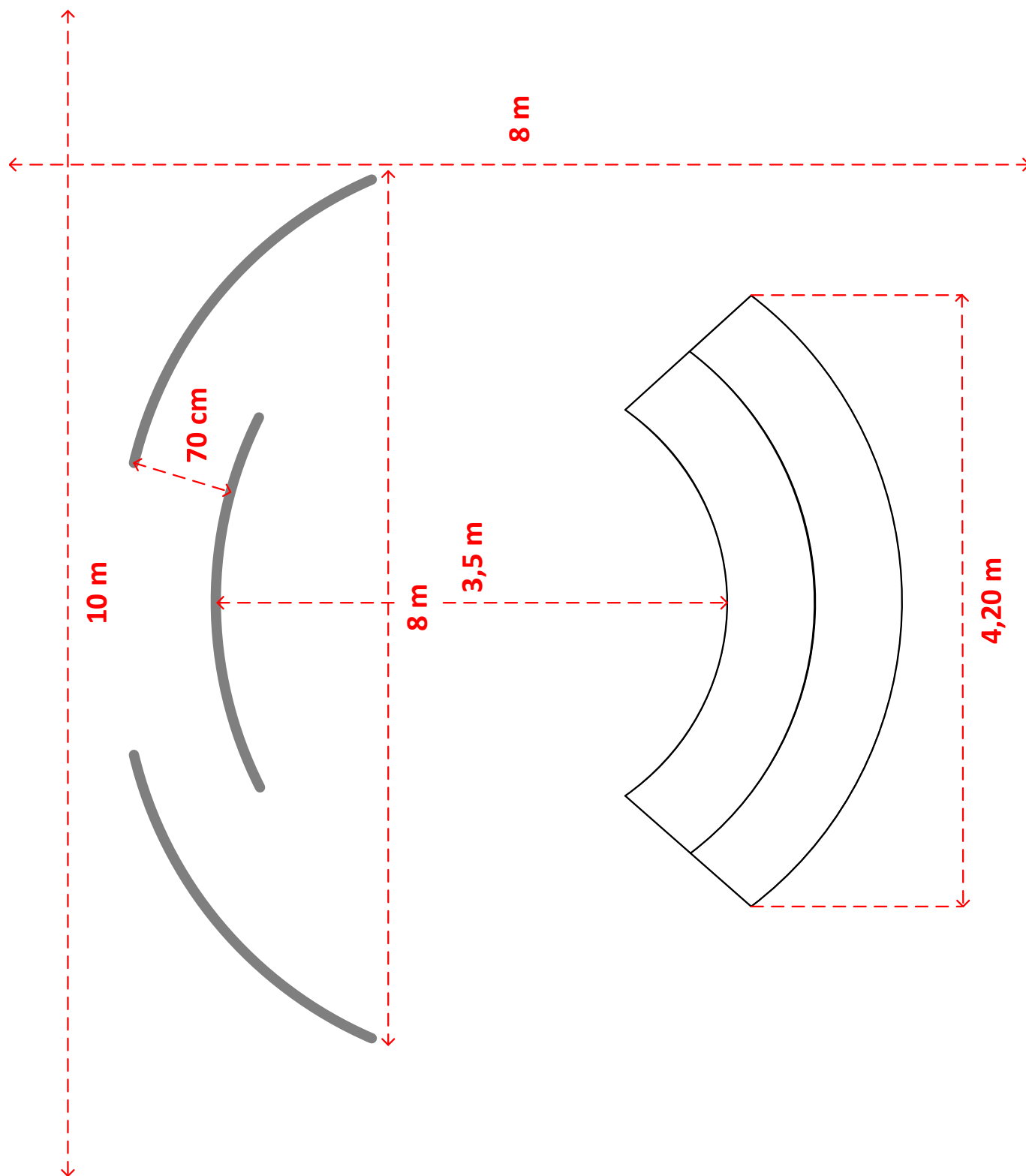
The performance lasts for **50 minutos**

Age rate: **3+**

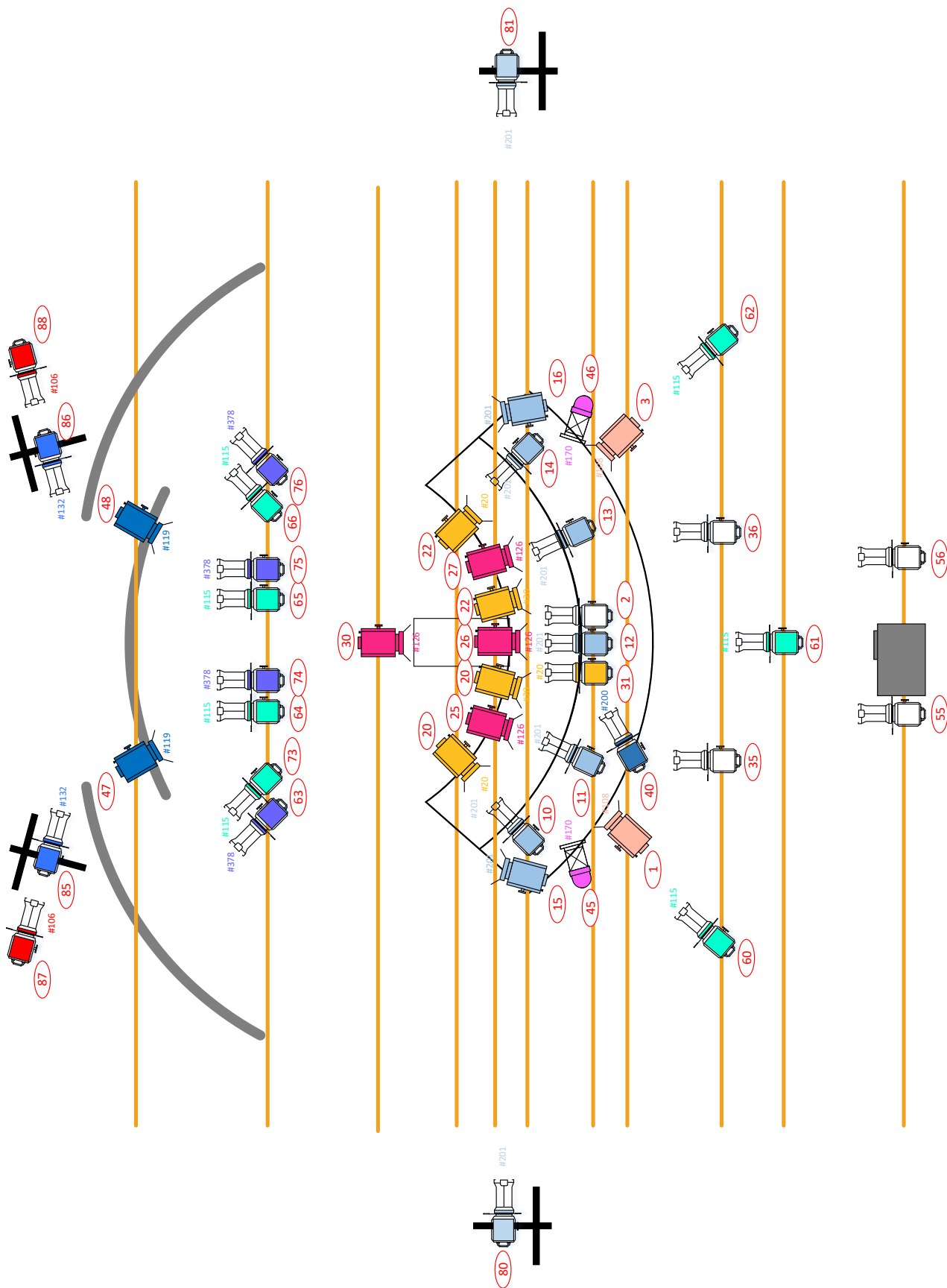
All promotional material for the performance must include the following:

Company sponsored by Governo de Portugal/Secretário de Estado da Cultura and DGArtes (with logos)

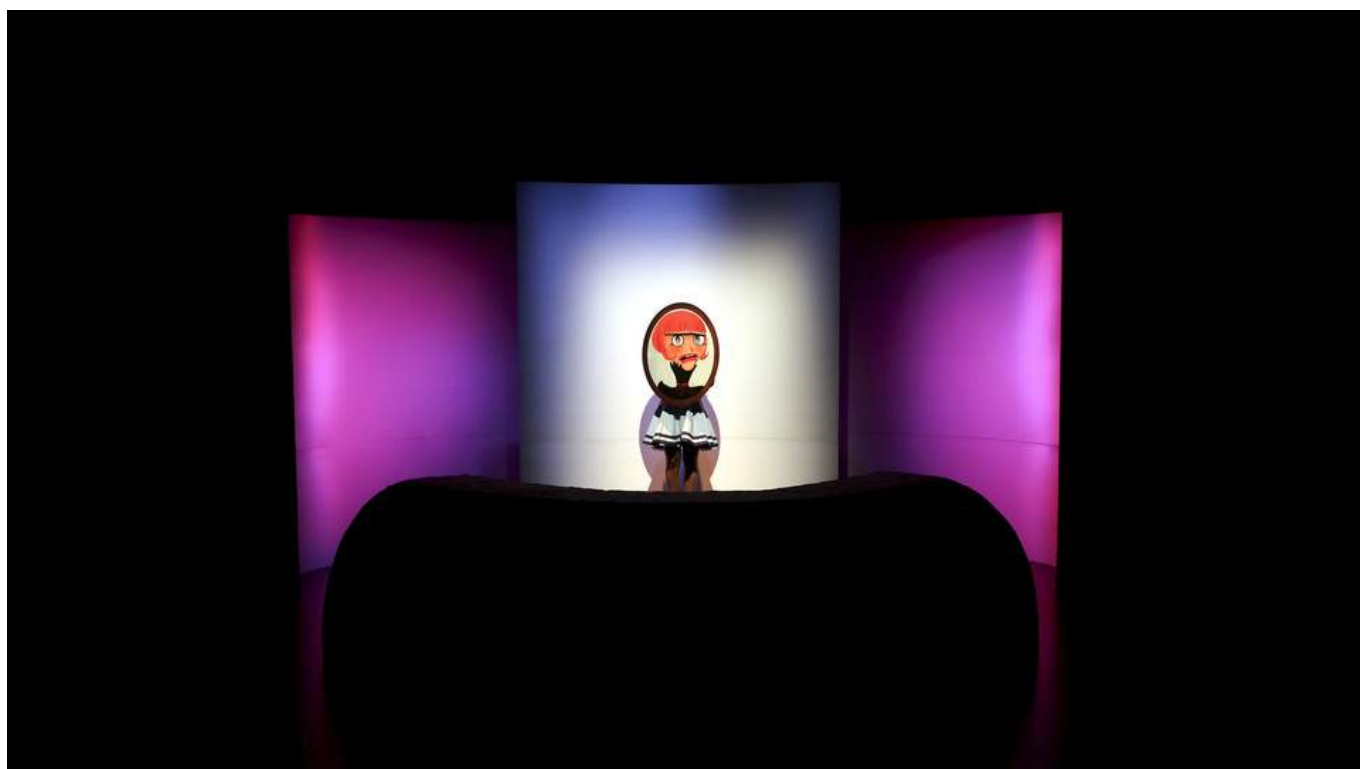
Coproduction Teatro de Marionetas do Porto and Teatro Municipal do Porto



LIGHTING PLAN
BARBA AZUL



STAGE PHOTOGRAPHY
BARBA AZUL



STAGE PHOTOGRAPHY
BARBA AZUL



STAGE PHOTOGRAPHY
BARBA AZUL

