



# AGAPORNIS

TEATRO DE MARIONETAS DO PORTO

Entidade financiada por:  
 GOVERNO DE PORTUGAL | SECRETÁRIO DE ESTADO DA CULTURA |  DG DIRECCÃO-GERAL DAS ARTES

## SYNOPSIS

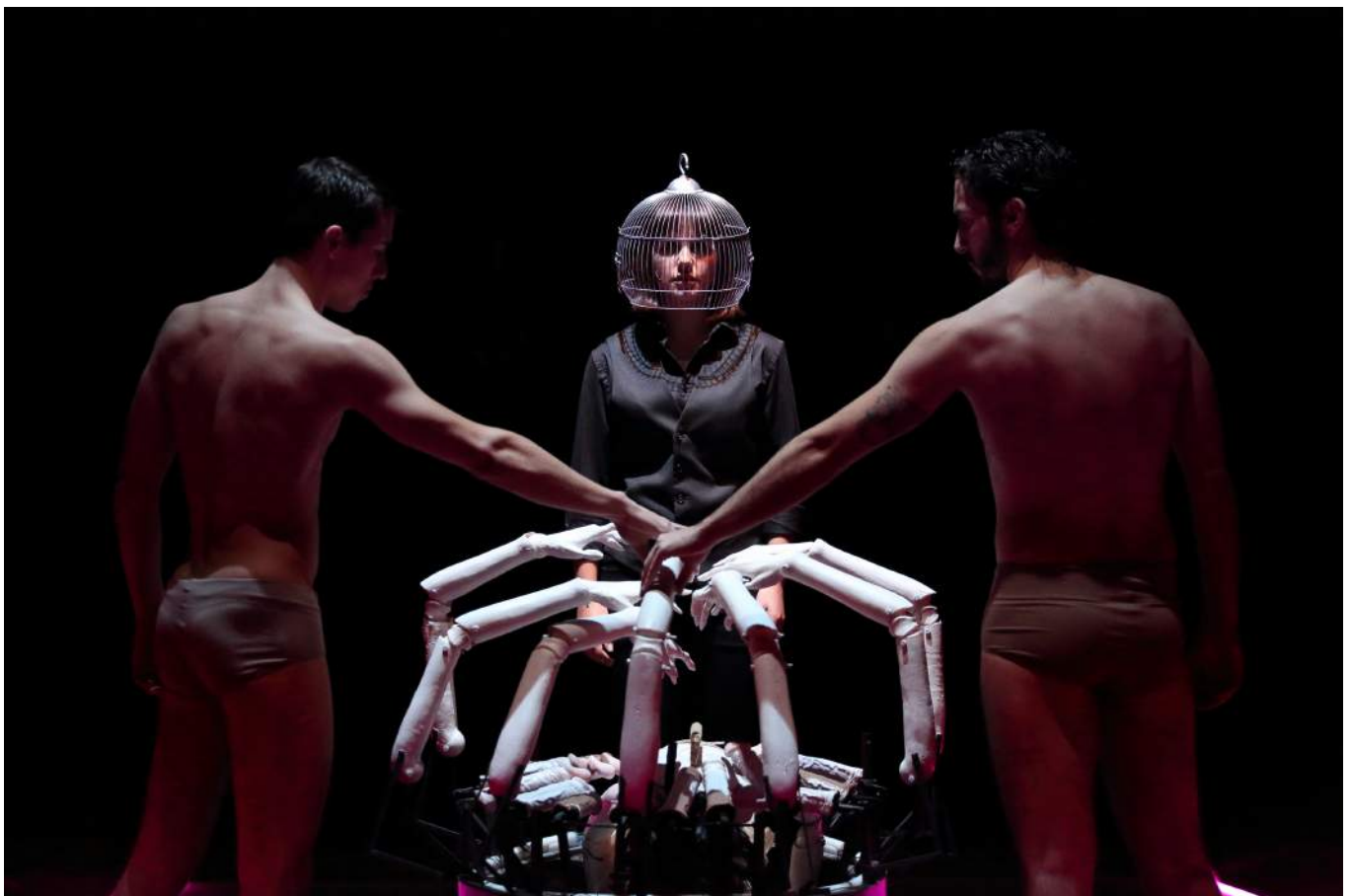
### AGAPORNIS

From the literary-erotic universe of Anaïs Nin, comes this dramatic performance for an audience over 18: a crossover of marionettes, objects and scenic devices that converge to an inner restlessness of the viewer, through direct confrontation with the taboo of sexuality.

An almost cinematic vision of the erotic fantasies of many female characters, coming from the imagination of Anaïs Nin, who play a central role here, representing the sexual expression that dwells in her literary works, whether fiction or reality.

AGAPORNIS. It's an ode to women, to love and sexuality.

*"Sex loses all its power, all its magic when it becomes explicit, abusive, when it becomes mechanically haunting. It becomes boring."* Anaïs Nin



# ARTISTIC INFORMATION

## **AGAPORNIS**

Concept

**Isabel Barros**

**Edgard Fernandes**

**Rui Queiroz de Matos**

Texts

**Edgard Fernandes**

**Rui Queiroz de Matos**

*a partir de Anaís Nin*

Staging

**Edgard Fernandes**

**Rui Queiroz de Matos**

Marionettes and Illustration

**Júlio Vanzeler**

Costumes

**Patrícia Valente**

Music

**@c (Pedro Tudela e Miguel Carvalhais)**

Lighting Design

**Filipe Azevedo**

**Francisco Campos**

**Renato Marinho**

Cast

**Micaela Soares**

**Ricardo Ribeiro**

**Rui Queiroz de Matos**

**Vasco Temudo**

Production

**Sofia Carvalho**

Lighting and sound operation

**Filipe Azevedo**

Construction workshop

**Sandra Neves (coordination)**

**Cláudia Armanda**

**João Trindade**

Scenographic construction

**Josué Maia**

Costume maker

**Carla Pereira**

Graphic design

**Pedro Ramos**

Photography

**Susana Neves**

# TECHNICAL RIDER

## AGAPORNIS

### STAGE

Minimum: 10m - downstage / 10m - depth - 6,5m height

### BLACK SCENE

Black Scene - 1 black backdrop and 10 legs (see plan attached)

Black floor (linoleum or wood)

### LIGHTING

Digital dimmers - 60 Circuits - Communication Protocol DMX 512  
(15 channels on stage and 45 channels on the grid)

Lighting console grandMA 2 Ultra Light (company equipment)

Light stage bars (see plan attached)

#### Structurs:

3x towers 2m high

8x floor bases for PAR 64

#### Spotlights: (Ver planta de luz )

8x Profile 1000W 12/28 (with shutters and filter frames)

8x Profile 1000W 23/50 (with shutters and filter frames)

32x PC 1000W (with barndoors and filter frames)

13x PAR 64 1000W (8x CP62 - 5x CP61) (with filter frames)

1x Source Four PAR (with lens MFL) (company equipment)

3x Iris for Profile

2x purple led hose (company equipment)

1x Incandescent Lamp (Bushing E14 +/- 20W)

2x Spotlights + 2x Doubles (to "ghost" link)

#### Filters:

(company equipment)

## **SOUND**

- 2x Monitors on stage
- PA system suitable for the space
- Soundboard minimum 8 channels (company equipment)
- 4x Lavalier microphones (company equipment)
- 1x double CD player (company equipment)

## **BACKSTAGE**

- 4 individual dressing-rooms or 1 collective dressing-room

## **SETTING-UP**

- 12 hours (3 shifts of 4 hours)
- Unloading and loading in:*
- 2h

## SUPPORT STAFF NEEDED

### AGAPORNIS

- 2 assistants to unload and load in
- 2 lighting technicians
- 1 sound technician
- 1 stage technician

## WORK PLAN

	SCENOGRAPHY	BLACK SCENE	LIGHTING	SOUND
1st SHIFT 4h	SETTING-UP	SETTING-UP	SETTING-UP	SETTING-UP
2nd SHIFT 4h		CHECKING	CHECKING	CHECKING AND PROGRAMMING
3rd SHIFT 4h			PROGRAMMING AND REHEARSAL	GENERAL REHEARSAL

## NOTE

- Before setting up, the stage and grid must be clean and without any equipment.

The performance lasts for **50 minutos**

Age rate: **18+**

### **All promotional material for the performance must include the following:**

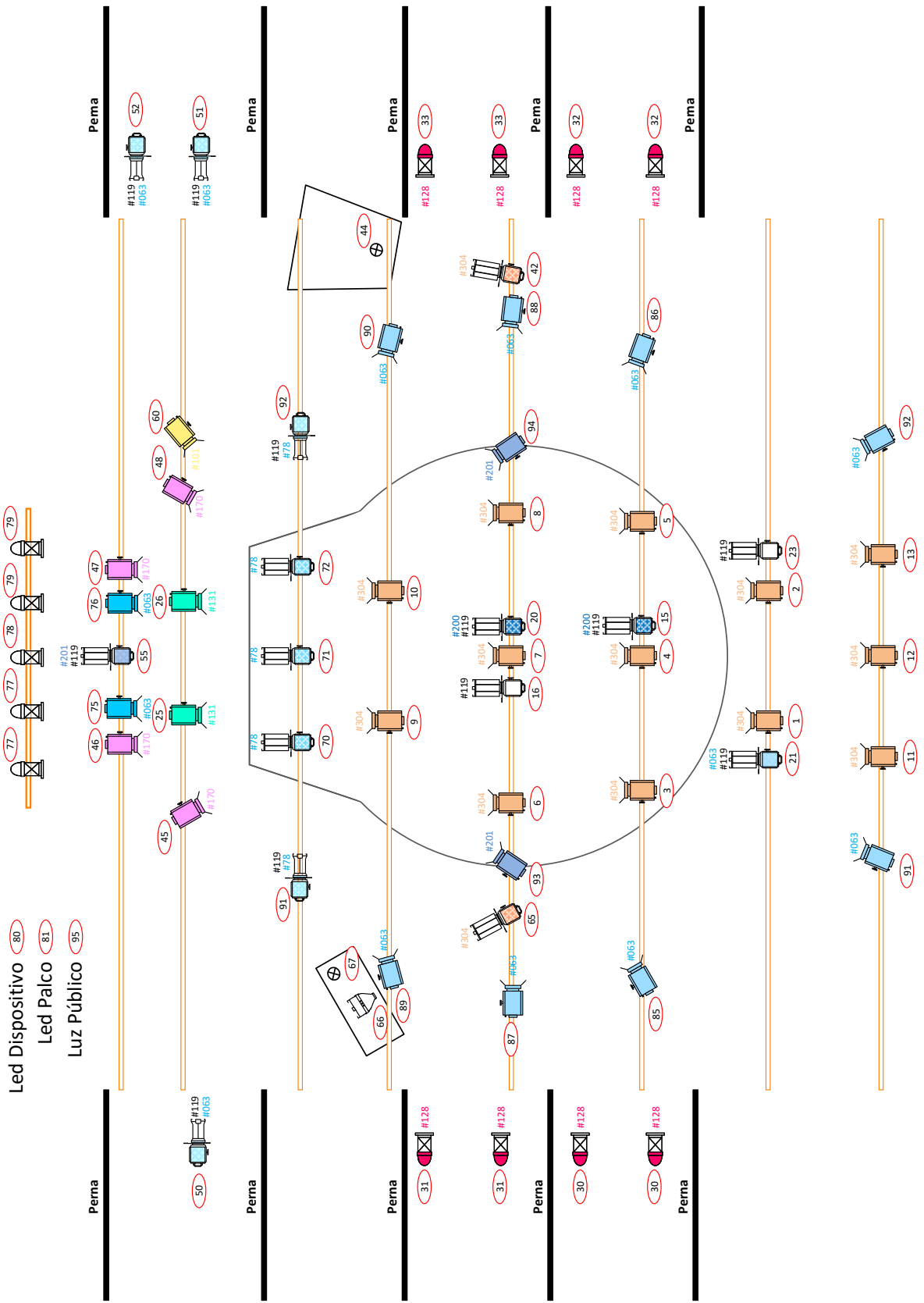
Company sponsored by Governo de Portugal/Secretário de Estado da Cultura and DGArtes (with logos)

# LIGHTING PLAN

## AGAPORNIS

### Desenho de Luz - AGAPORNIS

Fundo Negro



STAGE PHOTOGRAPHY  
AGAPORNIS





STAGE PHOTOGRAPHY  
AGAPORNIS



STAGE PHOTOGRAPHY  
AGAPORNIS

